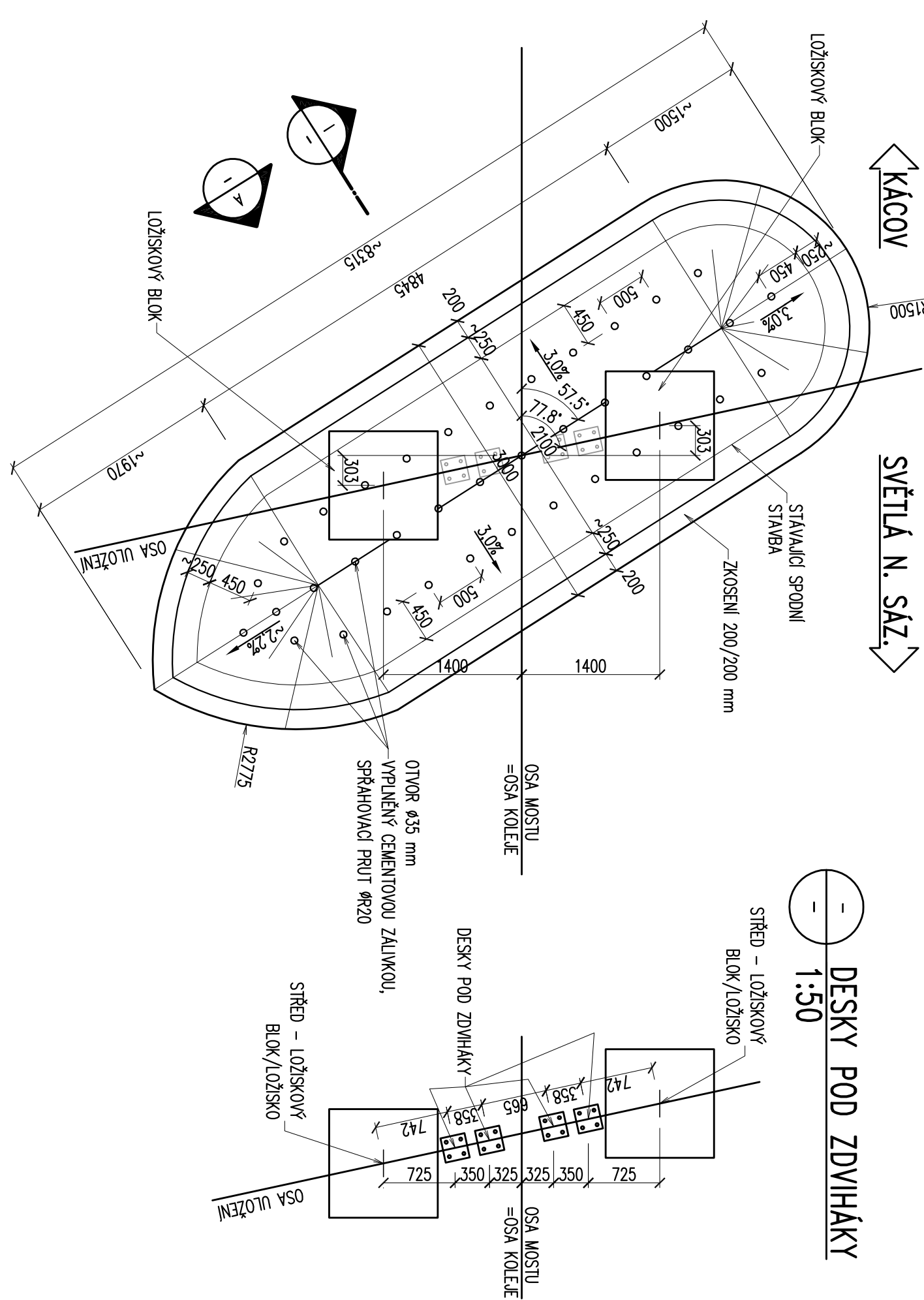


-	PUDORYS - TVAR
-	1:50

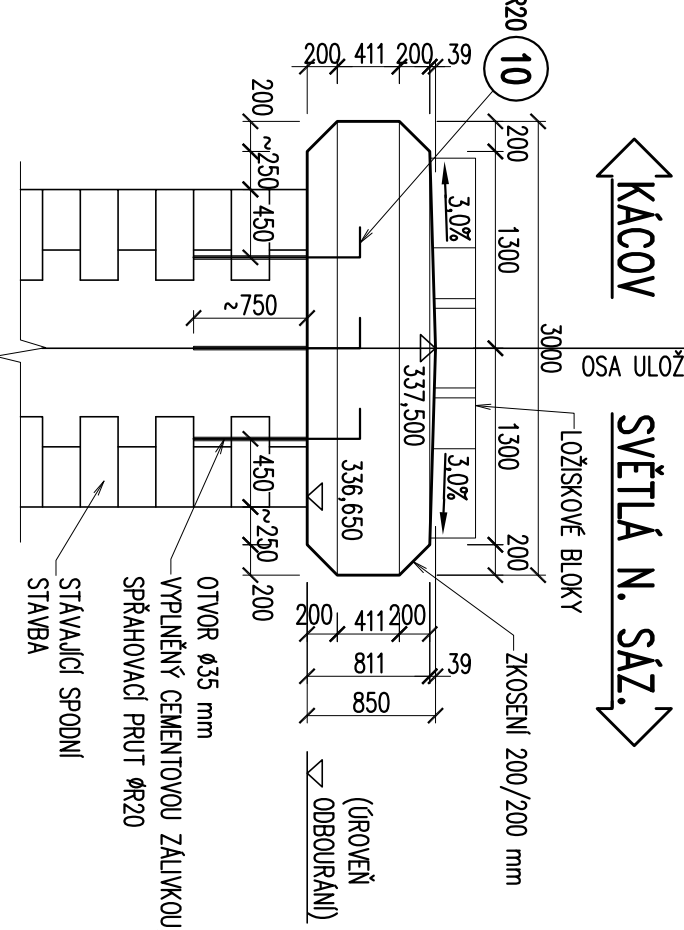


ŘEZ - TVAR

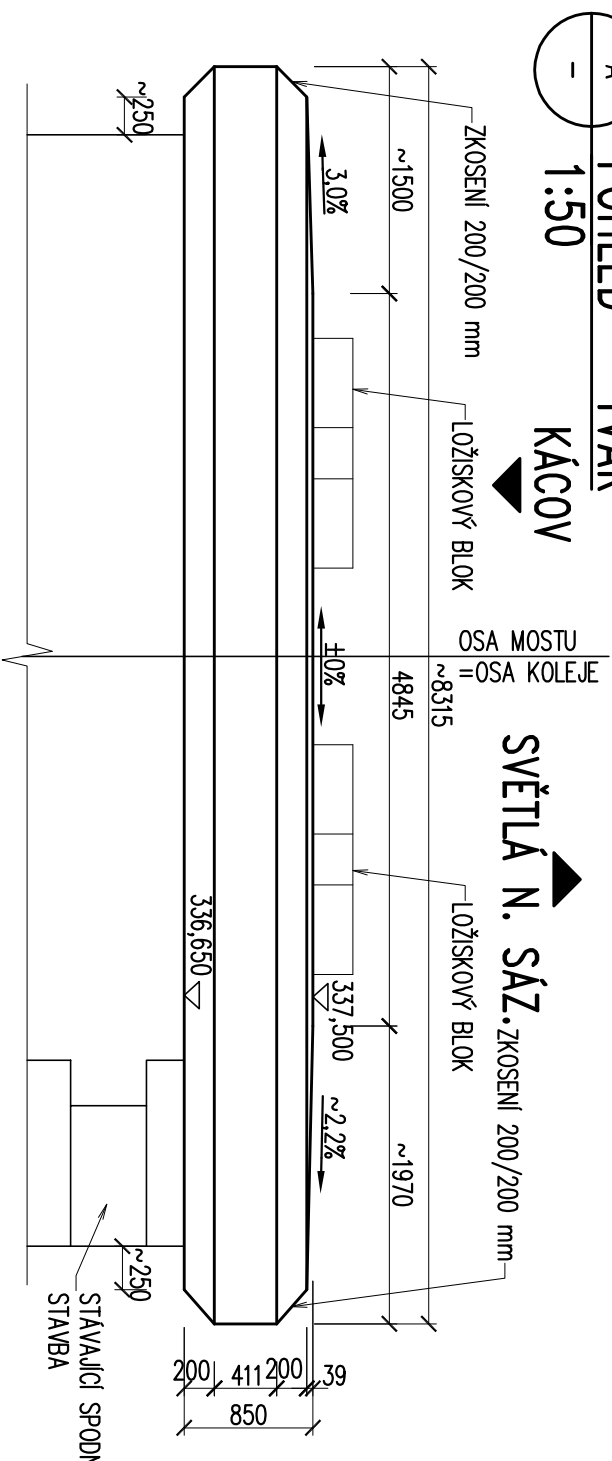
1:50

1

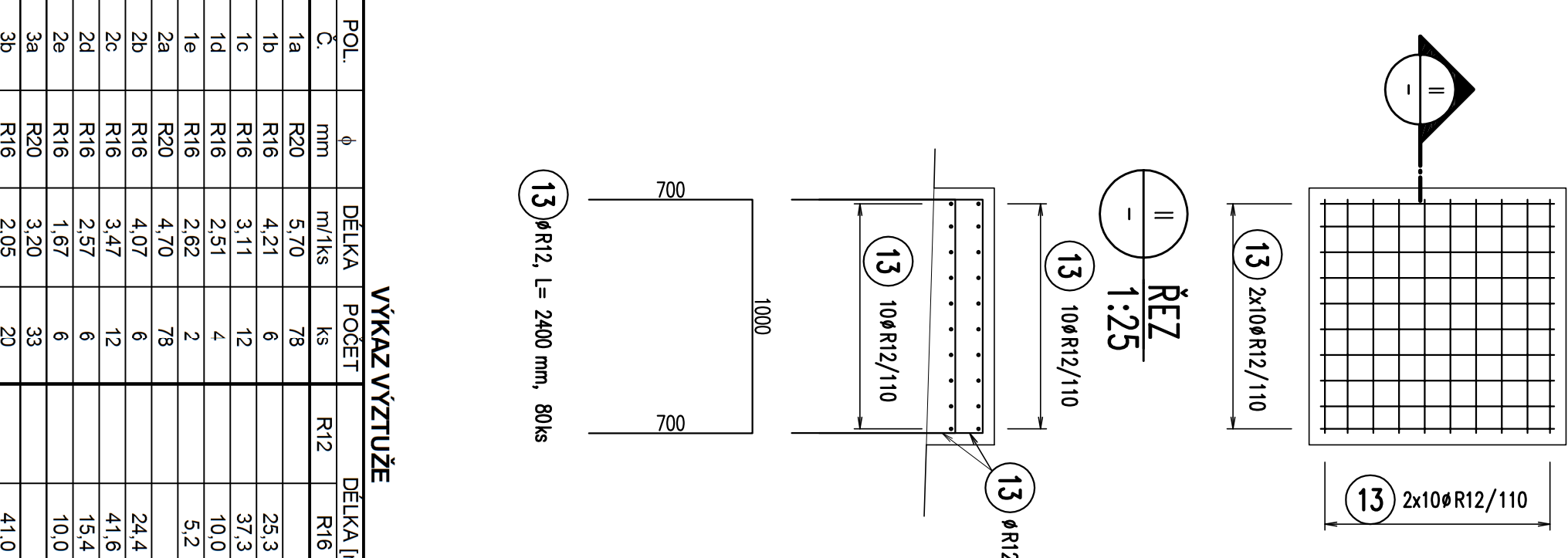
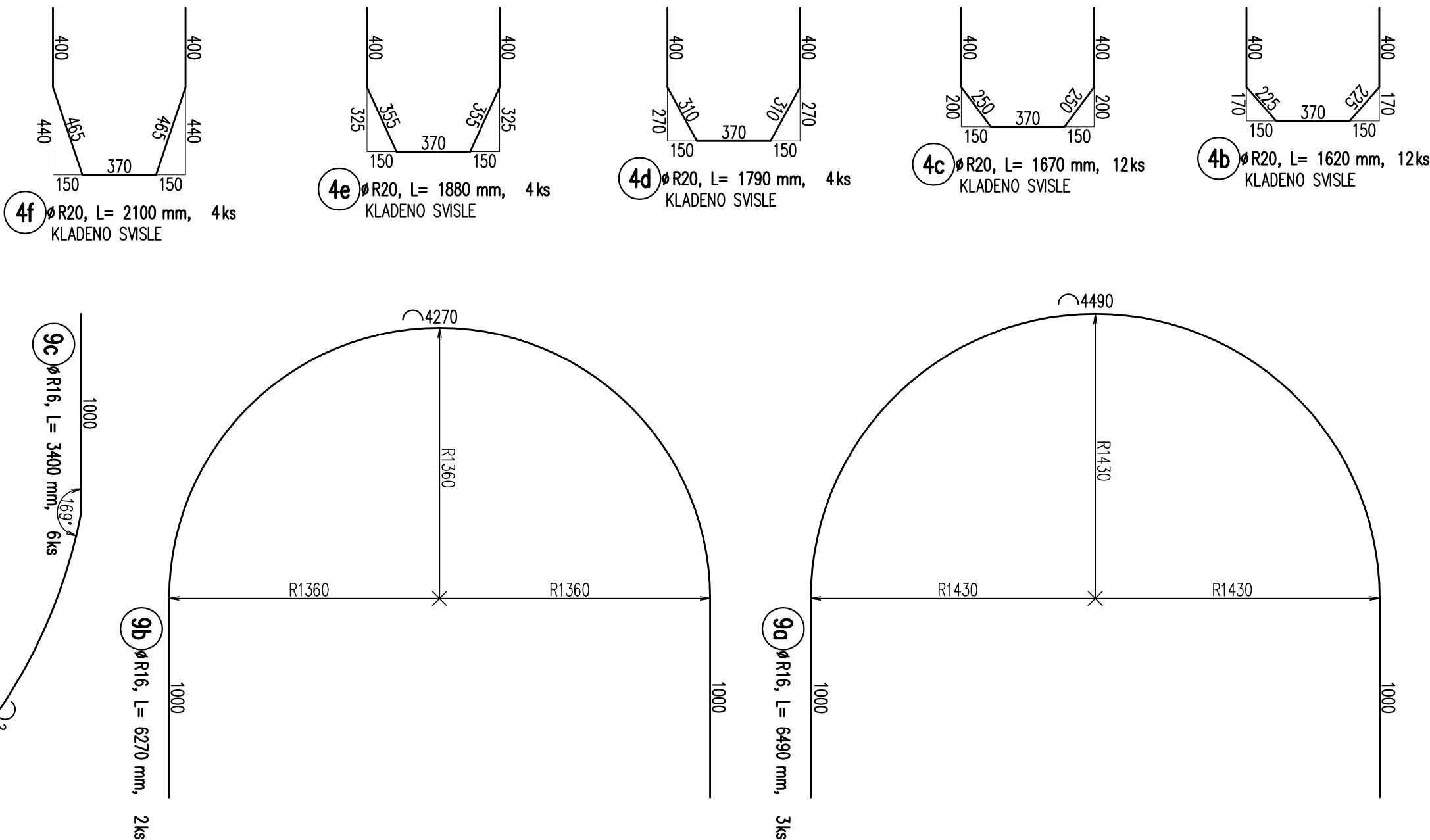
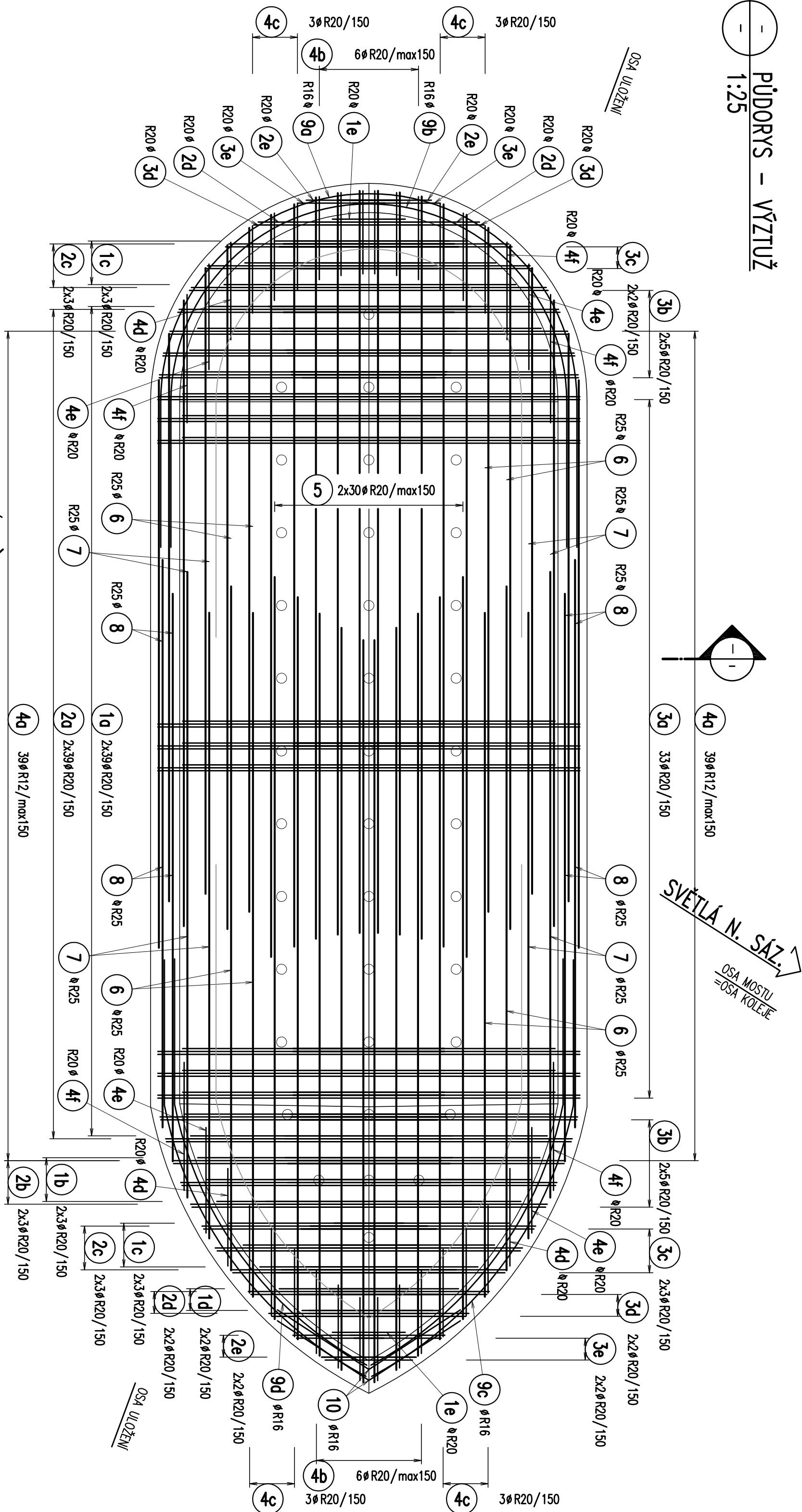
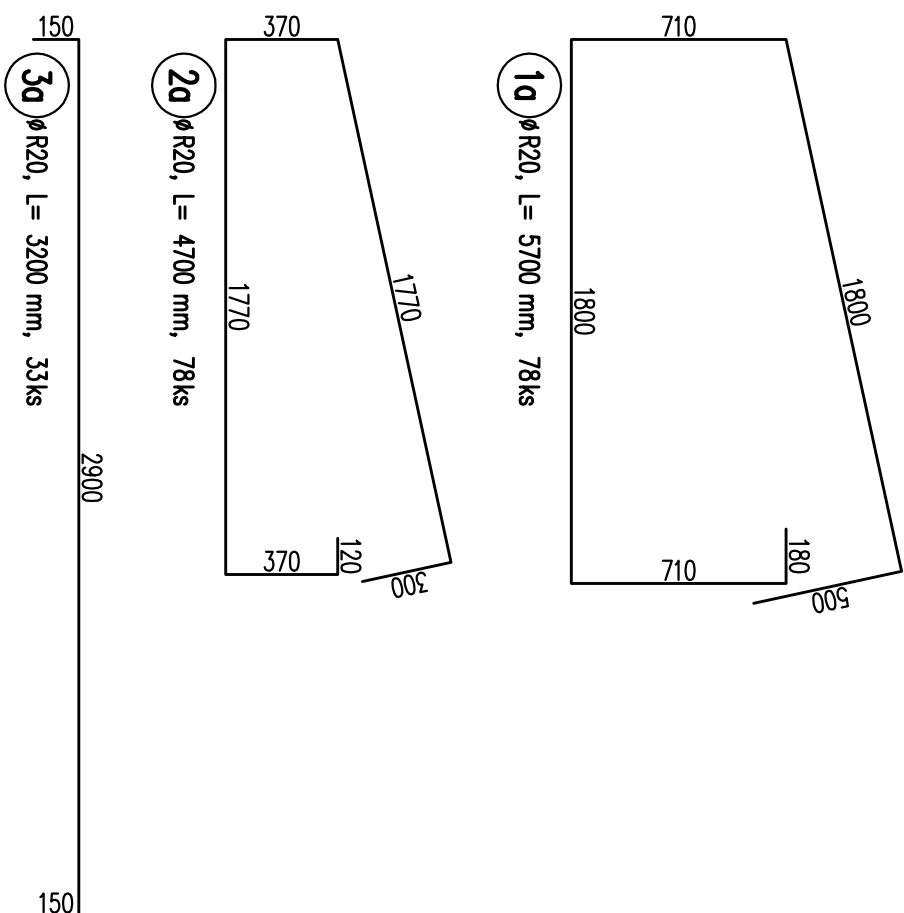
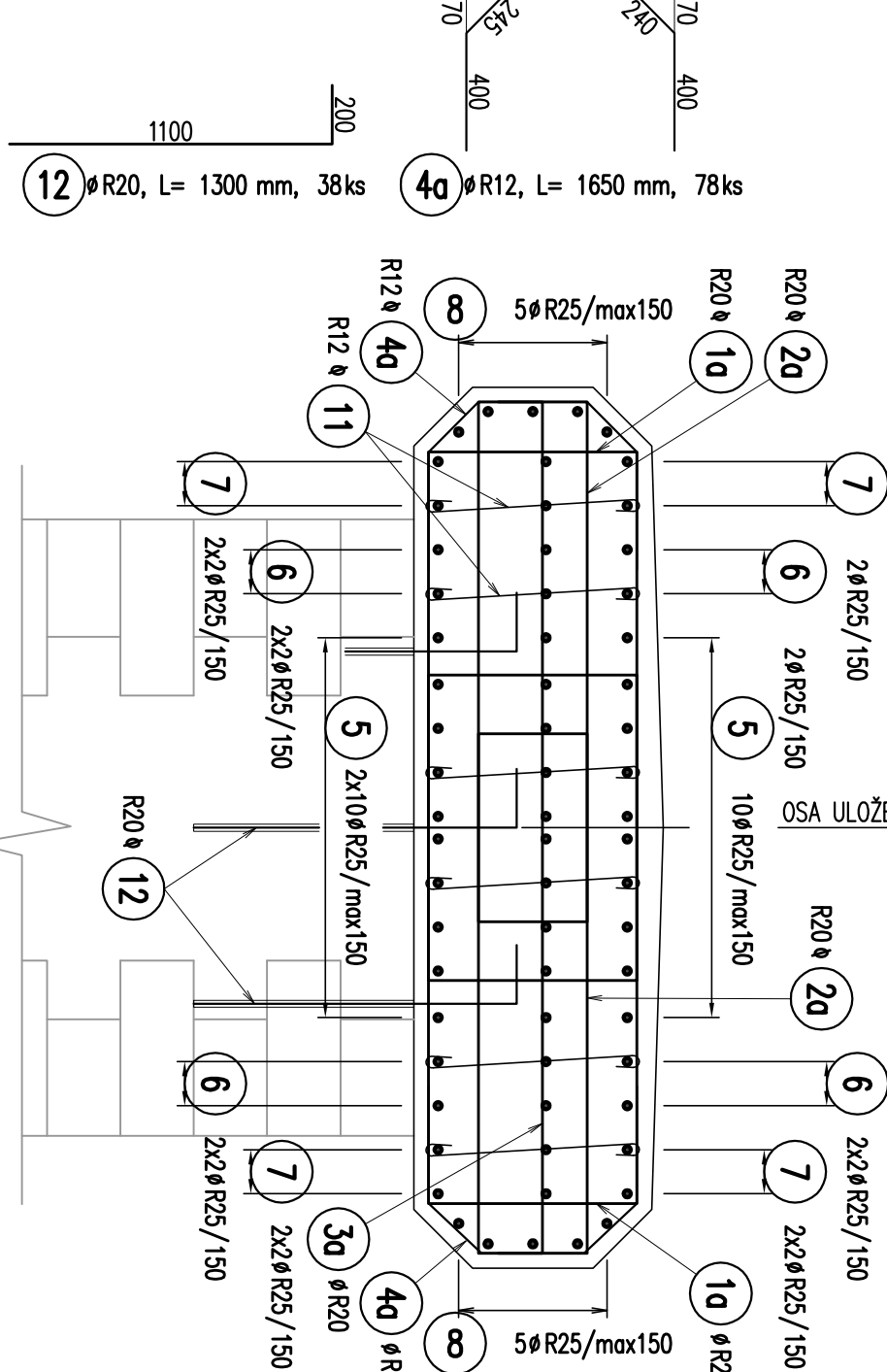
-



POHLED - TVAR



ŘEZ - VÝZTUŽ



Technical drawing of a roof plan showing various roof sections with dimensions and annotations.

**Annotations:**

- 834 MOSTU
- 834 KOLCE
- KACOV
- SPOLY - 1146/m<sup>2</sup>

**Dimensions and Labels:**

- Section 5:** #R25, l = 5100 mm, 60ks. Dimensions: 5100, 4700.
- Section 6:** #R25, l = 4700 mm, 24ks. Dimension: 4300.
- Section 7:** #R25, l = 4300 mm, 24ks. Dimension: 3900.
- Section 8:** #R25, l = 3900 mm, 20ks.
- Section 11:** #R12, l = 925 mm, 200ks. Dimension: 825.
- Section 12a:** #R16, l = 4070 mm, 6ks. Dimensions: 1750, 710.
- Section 12b:** #R16, l = 4210 mm, 6ks. Dimensions: 1750, 710.
- Section 13a:** #R16, l = 4070 mm, 6ks. Dimensions: 1800, 150.
- Section 13b:** #R16, l = 2050 mm, 20ks. Dimensions: 1800, 150.
- Section 14a:** #R16, l = 3740 mm, 12ks. Dimensions: 1550, 370.
- Section 14b:** #R16, l = 3110 mm, 12ks. Dimensions: 1200, 710.
- Section 15a:** #R16, l = 3740 mm, 12ks. Dimensions: 1550, 370.
- Section 15b:** #R16, l = 1750 mm, 10ks. Dimensions: 1800, 150.
- Section 16a:** #R16, l = 2570 mm, 4ks. Dimensions: 900, 710.
- Section 16b:** #R16, l = 2570 mm, 4ks. Dimensions: 1100, 370.
- Section 17a:** #R16, l = 2570 mm, 4ks. Dimensions: 900, 710.
- Section 17b:** #R16, l = 2570 mm, 4ks. Dimensions: 1100, 370.
- Section 18a:** #R16, l = 2620 mm, 2ks. Dimensions: 500, 710, 1000.
- Section 18b:** #R16, l = 2620 mm, 2ks. Dimensions: 500, 710, 1000.
- Section 19a:** #R16, l = 1450 mm, 6ks. Dimensions: 1300, 150.
- Section 19b:** #R16, l = 1450 mm, 6ks. Dimensions: 1300, 150.
- Section 20a:** #R16, l = 750 mm, 6ks. Dimensions: 600, 150.
- Section 20b:** #R16, l = 750 mm, 6ks. Dimensions: 600, 150.

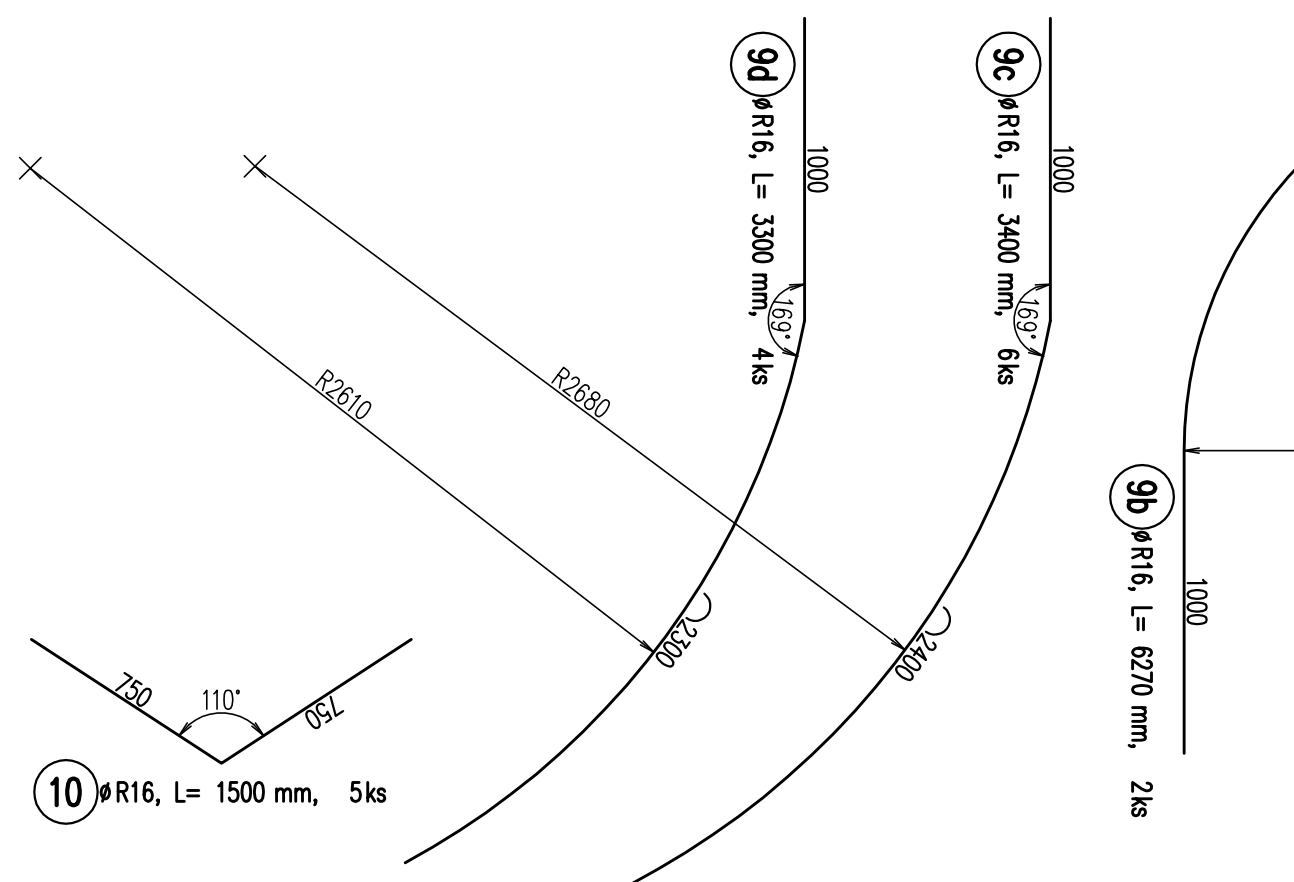
6b

400 400 440 370 150 150

4f

Ø R20, L= 2100 mm, KLADEN SVISLE

4 ks

[illegible][illegible]